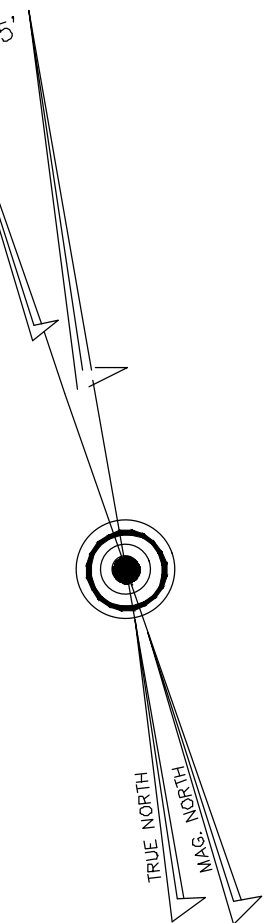
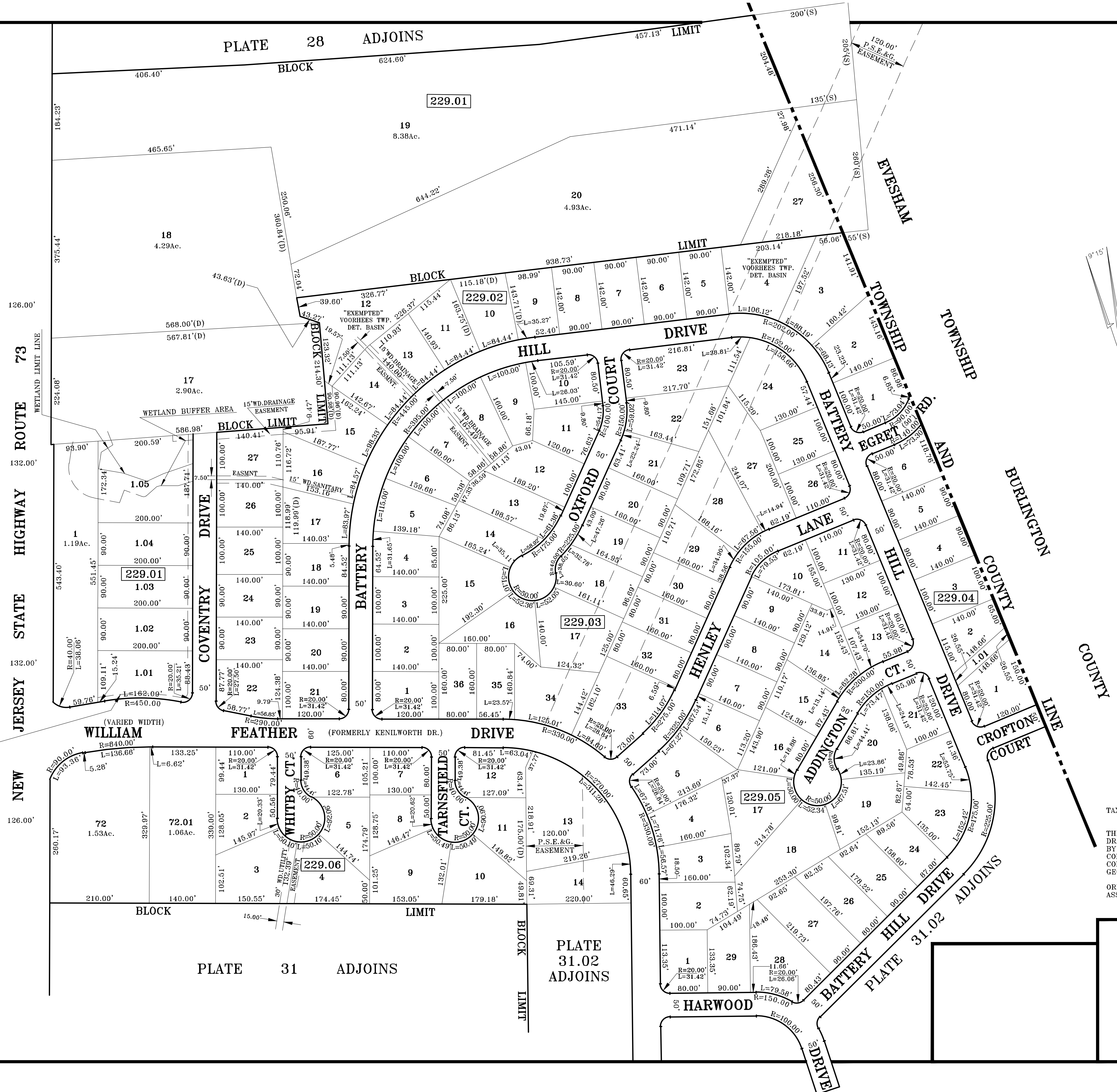


PLATE 28 ADJOINS

PLATE 30 ADJOINS

LOTS 1.01 THRU 1.05 IN BLOCK 229.01 GRANTS 20' WD. EASEMENT, 10' ON EITHER SIDE OF ROW TO AC-ELEC. CO. & VERIZON NJ, INC. & IT'S SUCCESSORS IN DB5142-0105,0115,0116



TAX MAPS ARE NOT FOR TITLE PURPOSES!!

THIS MAP HAS BEEN REDRAWN USING COMPUTER AIDED DRAFTING/DESIGN (CAD/D) BASED ON THE MAP PREPARED BY DOUGLAS R. LONG, P.E. L.S. DATED: SEPT. 1981. AS A SCANNED COPY SINCE 1993, HAS BEEN UPGRADED ANNUALLY BY USE OF COMPUTER AIDED DRAFTING/DESIGN (CAD/D) AND COORDINATE GEOMETRY (COGO).

ORIGINAL APPROVED MAP IS ON FILE IN THE MUNICIPAL ASSESSORS OFFICE.

**TAX MAP**

TOWNSHIP OF VOORHEES  
CAMDEN COUNTY, NEW JERSEY

SCALE: 1"=100'      DATE: DEC; 2011

PATRICK S. VITARELLI, P.L.S.

ENVIRONMENTAL RESOLUTIONS, INC.  
525 FELLOWSHIP ROAD SUITE 300  
MT. LAUREL, NEW JERSEY 08054

TO SHOW CONDITIONS AS OF 10-01-2017